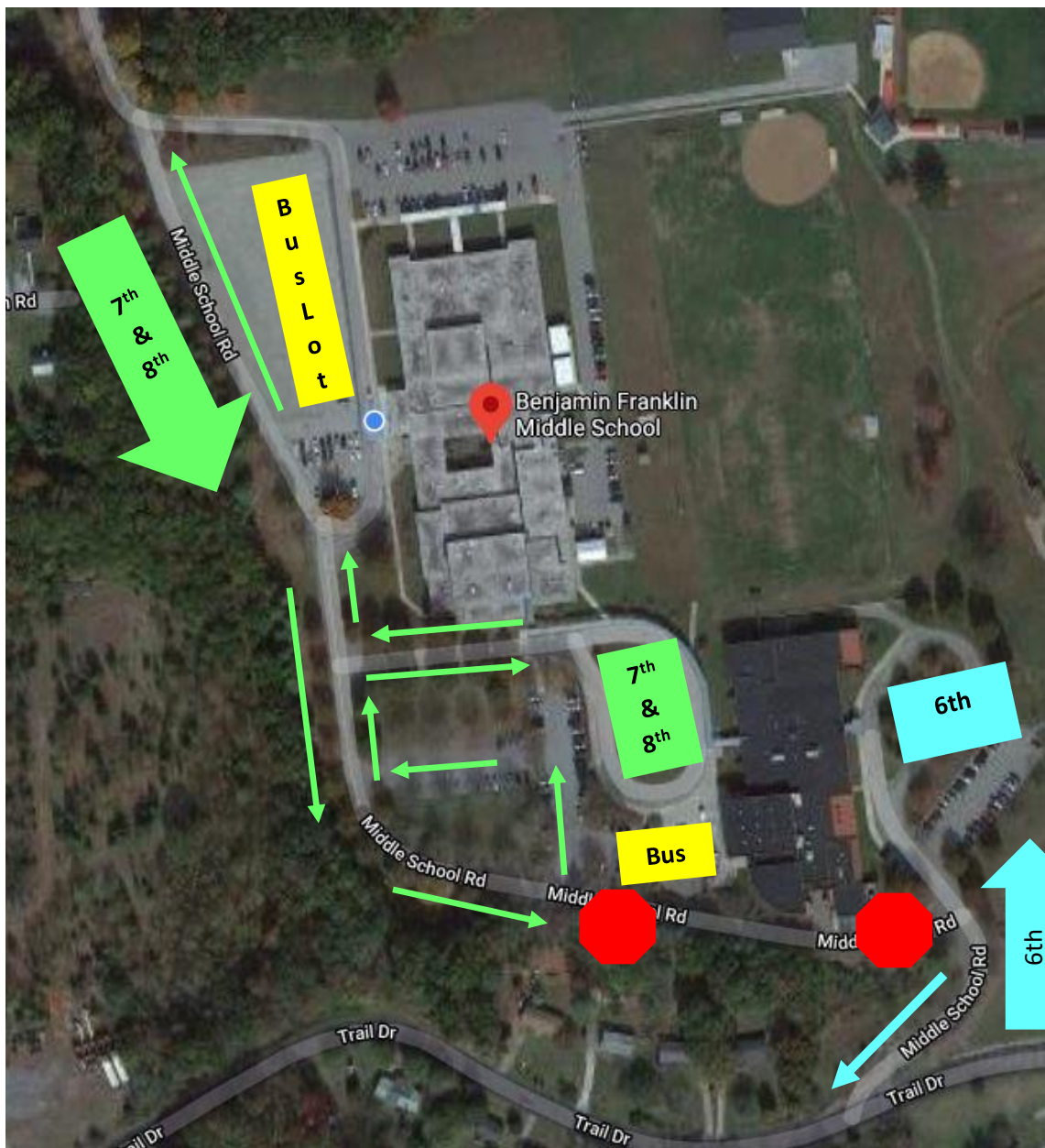


BFMS Afternoon Car Rider Traffic Pattern and Procedures

Effective Tuesday, March 2, 2021

We are working to make the afternoon Car Rider procedures as efficient as safely possible. Please bear in mind that we cannot change a few parameters, which include our dismissal time, the physical layout of the campus, the number of vehicles on campus, and the number of personnel we have available to provide support. We have worked within these limitations to maximize every resource and enable you to pick up your child as safely and quickly as possible. We ask for patience and respect, especially during the first week of these changes. If we follow these procedures and directions of the personnel on the ground, this can be effective and make the most of everyone's time!

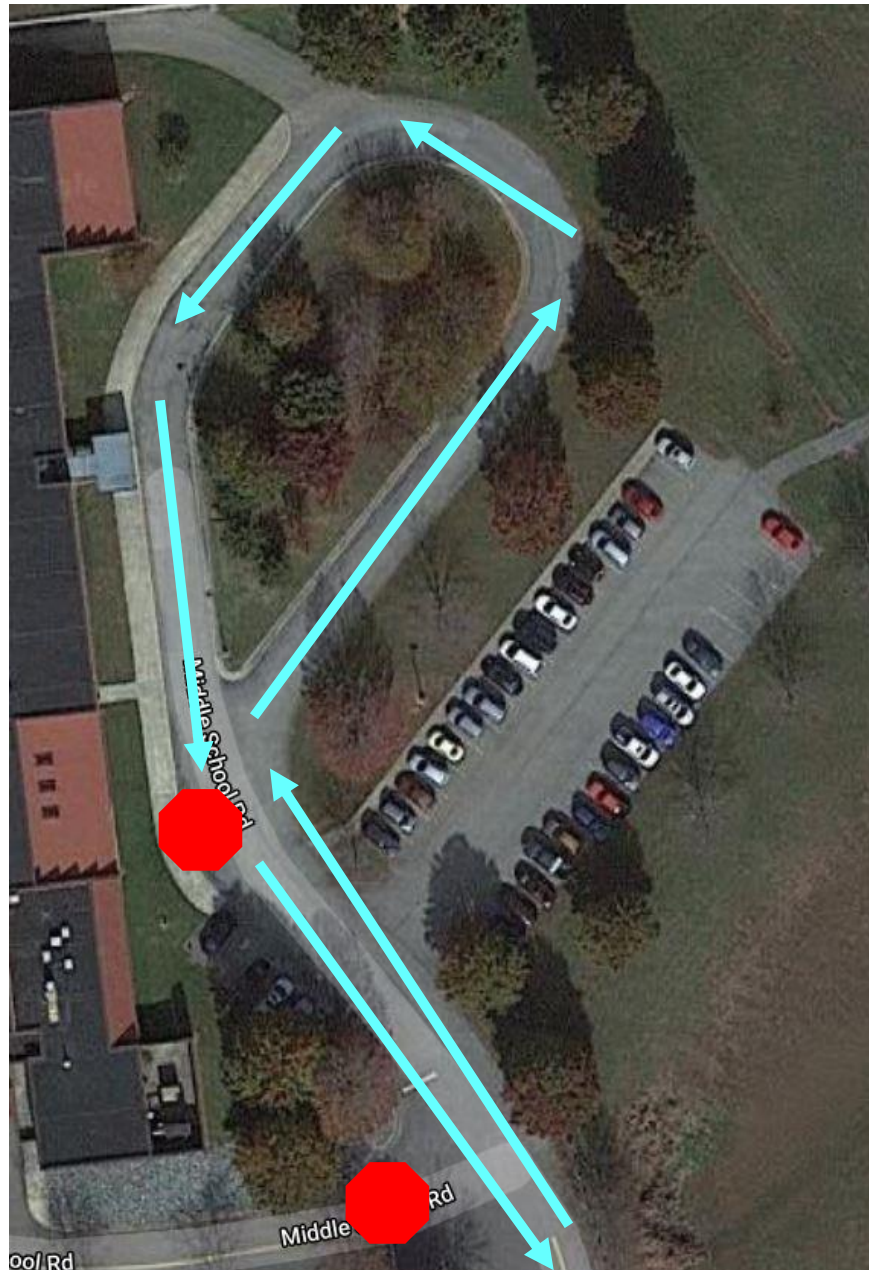
There is an overview map below and there are specific directions and maps for each grade level.



6th Grade Student Pick-Up

If you only have a 6th grade student(s) to pick up, please follow these directions. If you are picking up a 6th grade student as well as a student in 7th or 8th grade, please follow the 7th & 8th grade Pick Up procedures. We will send those 6th grade students to the bus loop for afternoon pick up.

- Afternoon Pick Up will be behind the East building just like morning drop off
- Enter and Exit campus from Trail Drive
- When you are at a stop, please text your child that you are in the loop.
- Traffic will not be allowed to go up to main campus from Trail Drive or to go from main campus down to Trail Drive



7th and 8th Grade Student Pick-Up

If you have a 6th Grade student as well as a 7th and/or 8th Grade student, we will have the 6th grade student come to the bus loop. Please follow these procedures.

- Enter and Exit campus from Business 220
- Afternoon Pick Up will be in the bus loop between the East and West buildings
- To get more cars onto campus and not on the main road, we will route the car-rider line through the parking lot. Please see the map below
- When you get to the bus loop circle, we will start two lanes of traffic. Please follow the car line all the way around the loop
- Once all cars have stopped, we will allow students to load.
- Once all students are loaded, we will allow one lane of cars to exit the loop at a time
- When you enter the loop and are at a stop, please text your child that you are in the loop
- Traffic will not be allowed to enter or exit main campus from Trail Drive during afternoon pick-up

7th & 8th Gr
Enter/Exit B220

